



# Brooks Brothers® Women's Open-Neck Satin Blouse BB18009

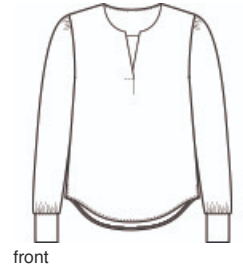


The soft satin fabric of this versatile blouse has a subtle sheen, lending an elegant look to any outfit. Designed for an easy fit to keep you feeling confident and comfortable.

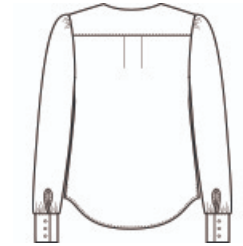
- 4.1-ounce, 100% polyester satin
- Anti-static finish
- Open v-neck popover
- Wide box pleat at back yoke
- Gathers at shoulders and cuffs
- Three self-fabric-covered buttons at cuffs
- Side vents

**CARE INSTRUCTIONS**

Machine Wash Cold With Like Colors. Do Not Bleach.  
Tumble Dry Low. Remove Promptly. Cool Iron If Necessary.

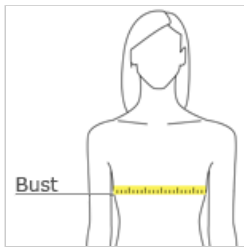


front



back

**HOW TO MEASURE**



**BUST**  
Measure under the arm and around the fullest part of the bust with arms down, keeping tape horizontal.

**SIZE CHART**

	XS	S	M	L	XL	2XL	3XL	4XL
Size	2	4/6	8/10	12/14	16/18	20/22	24/26	28/30
Bust	32-34	35-36	37-38	39-41	42-44	45-47	48-51	52-55

**COLOR INFORMATION**



Deep Black  
PMS BLACK C



Heritage Blue  
PMS 2708C



Night Navy  
PMS 4280C



Shadow Grey  
PMS COOL GRAY  
10C