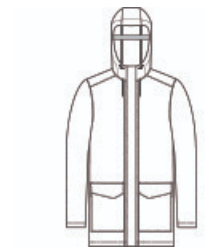


PORT AUTHORITY

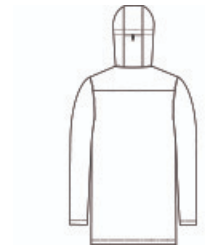
Port Authority® Collective Outer Soft Shell Parka J919



- 94/6 polyester/spandex woven mini ripstop shell bonded to a water-repellent, breathable film insert, 100% polyester brushed tricot lining
- Weatherproof outer layer into which other Collective styles can be zipped and secured by snap attachments
- 8000MM fabric waterproof rating
- 5000G/M2 fabric breathability rating
- Slightly longer length
- Attached, adjustable hood with locking drawcord
- Full-length interior storm flap
- Full-length exterior storm flap with snap closure
- Two-way center front zipper
- Flap-and-snap, dual-entry patch pockets with zippered side pockets
- Water protection method: laminate film and durable water-repellent finish (DWR)
- 3-in-1 system jacket: interior center front zip-in/zip-out attachment point and 3 snap points to layer additional Collective pieces



front

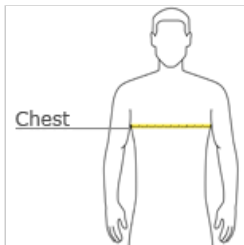


back

CARE INSTRUCTIONS

Machine Wash Cold. Only Non-Chlorine Bleach When Needed. Tumble Dry Low. Cool Iron If Necessary.

HOW TO MEASURE



CHEST WIDTH
Measure under the arm and around the fullest part of the chest with arms down, keeping tape horizontal.

SIZE CHART

	XS	S	M	L	XL	2XL	3XL	4XL
Chest	32-34	35-37	38-40	41-43	44-46	47-49	50-53	54-57

COLOR INFORMATION



Dark Olive Green
PMS Black 2C



Deep Black
PMS BLACK C



Graphite
PMS 7540C



River Blue Navy
PMS 533C