



# Mercer+Mettle™ Women's Open Front Cardigan Sweater MM3023



Soft, comfortable, and as a transitional layer for day or night, this easy care sweater is a refined knit that won't bag out with wear. Sophisticated details like square patch pockets and a wide, rib bottom hem lend a modern sensibility to accent your unique sense of style.

**Fabric+Weight**

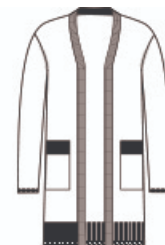
- 90/9/1 cotton/nylon/spandex

**Features+Benefits**

- Fully-fashioned armholes
- Square patch pockets
- Wide, rib bottom hem

**CARE INSTRUCTIONS**

Machine Wash Cold With Like Colors. Only Non-Chlorine Bleach When Needed. Tumble Dry Low. Cool Iron If Necessary.

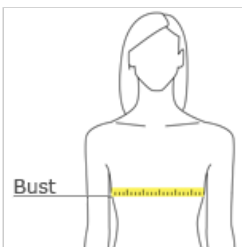


front



back

**HOW TO MEASURE**



**BUST**  
Measure under the arm and around the fullest part of the bust with arms down, keeping tape horizontal.

**SIZE CHART**

|      | XS    | S     | M     | L     | XL    | 2XL   | 3XL   | 4XL   |
|------|-------|-------|-------|-------|-------|-------|-------|-------|
| Size | 2     | 4/6   | 8/10  | 12/14 | 16/18 | 20/22 | 24/26 | 28/30 |
| Bust | 32-34 | 35-36 | 37-38 | 39-41 | 42-44 | 45-47 | 48-51 | 52-55 |

**COLOR INFORMATION**



Birch  
PMS 7534C



Deep Black  
PMS BLACK C



Gusty Grey Heather  
PMS COOL GRAY  
8C