



Nike Dri-FIT Vapor Polo NKDC2108



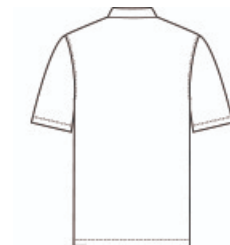
Available in solids and heathers, this polished polo brings an elevated look to any work or weekend wardrobe. Designed with Dri-FIT moisture management technology, it also performs to keep you comfortable. Features a self-fabric collar and two-button placket. Rolled-forward shoulder seams, open hem sleeves and open hem. A contrast heat transfer Swoosh logo is on the left sleeve. Made of 5.4-ounce, 87/13 polyester/spandex Dri-FIT fabric (solid) and 5.5-ounce, 87/13 polyester/spandex Dri-FIT fabric (heather).

CARE INSTRUCTIONS

Machine Wash Cold. Wash Inside Out. Wash With Like Colors. Do Not Use Softeners. Do Not Use Bleach. Tumble Dry Low. Do Not Iron. Do Not Dry Clean.

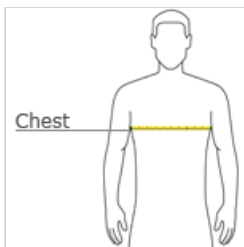


front



back

HOW TO MEASURE



CHEST WIDTH
Measure under the arm and around the fullest part of the chest with arms down, keeping tape horizontal.

SIZE CHART

	XS	S	M	L	XL	2XL	3XL	4XL
Chest	32-35	35-37 1/2	37 1/2-41	41-44	44-48 1/2	48 1/2 -53 1/2	53 1/2 - 58	58-63

COLOR INFORMATION

								
Anthracite PMS 432C	Black PMS NTR BLACK C	Black Heather	Cool Grey PMS 424C	Game Royal PMS 661C	Game Royal Heather PMS 661C	Gym Red PMS 187C	Midnight Navy PMS 2767C	White PMS NO MATCH