



OGIO® Slate Polo. OG143



This sophisticated tonal heather polo has a slight slub texture and performs with moisture wicking and stretch for a polished look.

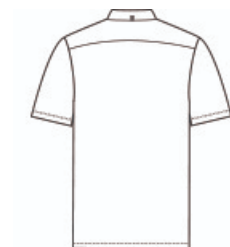
- 5.2-ounce, 90/10 poly/spandex with stay-cool wicking technology
- OGIO heat transfer label for tag-free comfort
- Self-fabric collar with collar stand
- OGIO woven tab at center back collar
- Angled 3-button placket with flat matte black silicone buttons
- Forward side seams
- Set-in, open hem sleeves
- Black reflective O on left sleeve

CARE INSTRUCTIONS

Machine wash cold with like colors. Do not use fabric softener. Do not bleach. Tumble dry low. Cool iron if necessary. Do not dry clean.

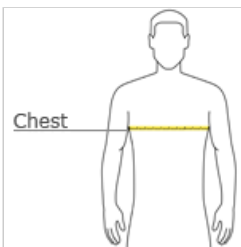


front



back

HOW TO MEASURE



CHEST WIDTH

Measure under the arm and around the fullest part of the chest with arms down, keeping tape horizontal.

SIZE CHART

	XS	S	M	L	XL	2XL	3XL	4XL
Chest	32-34	35-37	38-40	41-43	44-46	47-49	50-53	54-57

COLOR INFORMATION



Blacktop
PMS NTR BLACK C



Gear Grey
PMS 425C



Navy
PMS 533C