



TravisMathew Cold Bay Vest TM1MW453

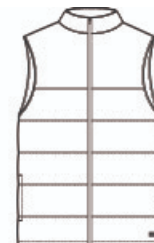


When life leaves you out in the cold, this quilted, lightweight puffer vest will help keep you warm. With 4-way stretch for easy movement, the Cold Bay Vest is your first defense against chilly days and nights.

- 4.1-ounce, 88/12 polyester/spandex with lightweight poly fill
- Zip-through collar
- Reverse coil zipper with kissing welt
- Side-entry pockets
- TM logo woven label at left hem

CARE INSTRUCTIONS

Machine Wash Cold With Like Colors Gentle Cycle. Tumble Dry Low. Cool Iron if Needed. Only Non-Chlorine Bleach if Needed.

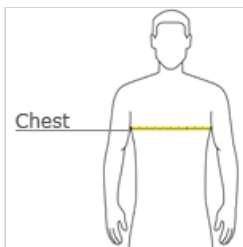


front



back

HOW TO MEASURE



CHEST WIDTH
Measure under the arm and around the fullest part of the chest with arms down, keeping tape horizontal.

SIZE CHART

	S	M	L	XL	2XL	3XL
Chest	35-37	38-40	42-44	45-47	48-50	52-54

COLOR INFORMATION



Black
PMS 426C



Quiet Shade Grey
PMS COOL GREY
10C